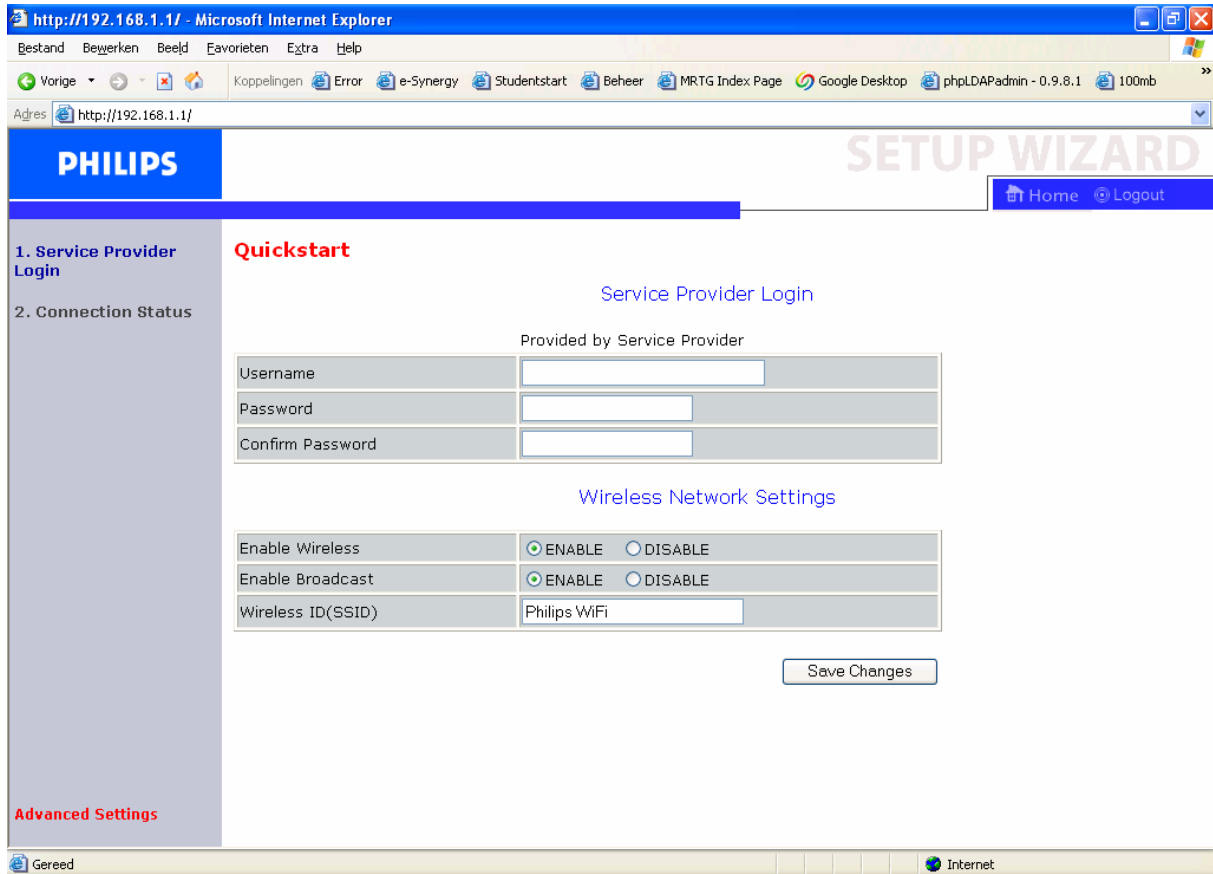


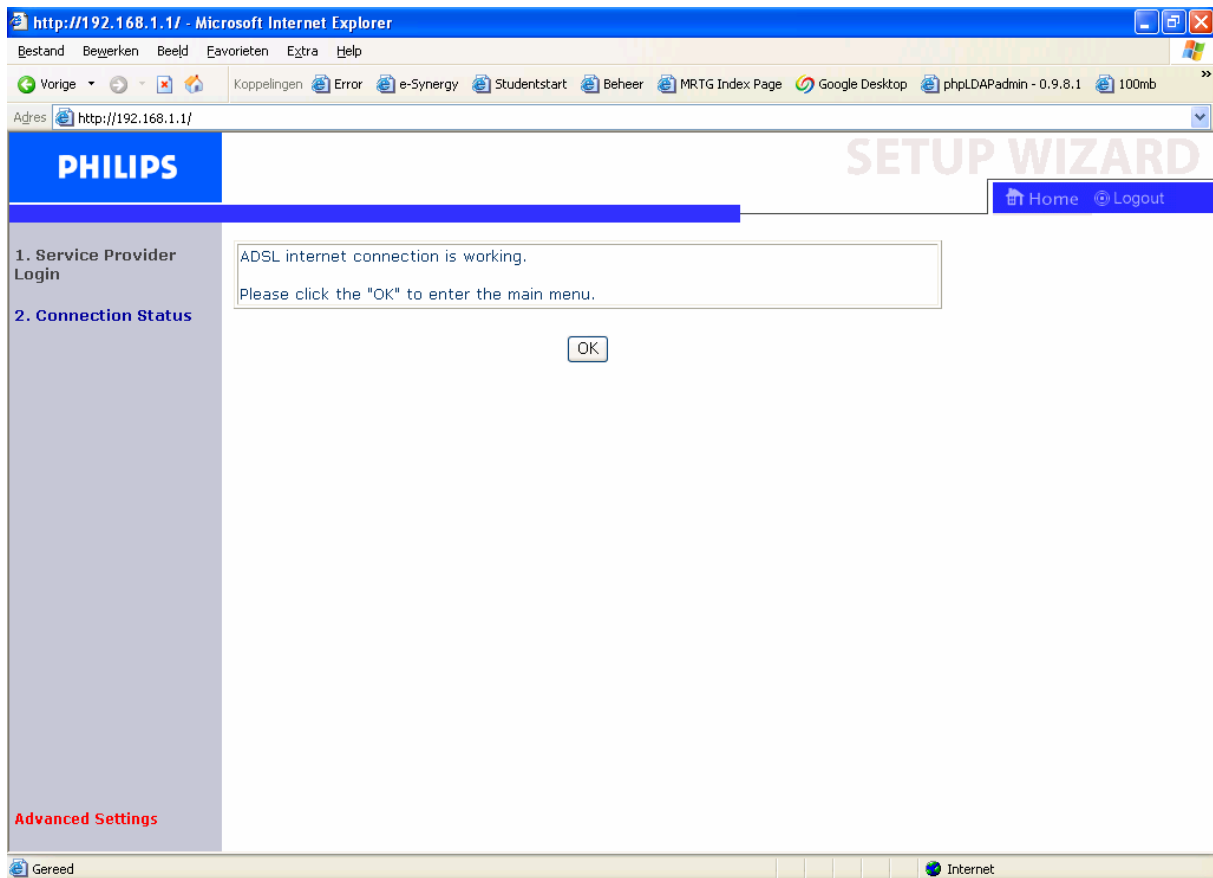
Instellen van de Belgacom ADSL wireless philips.

- Open uw browser (Internet Explorer, Netscape, Firefox, ...).
- Type in de adresbalk de volgende link in: <http://192.168.1.1>, druk daarna op ENTER of klik op 'Ga naar'.
- U komt in de webinterface van de ADSL modem.



- Bij 'Username' geeft u uw gebruikersnaam in van uw ADSL verbinding (vb: spb1111@fulladsl).
- Bij 'password' en 'Confirm Password' geeft u uw paswoord van uw verbinding in.
- Vervolgens klikt u op 'Save Changes'.

- Dan komt u op het volgende scherm.



- Hier klikt u op 'OK'.
- Nu is uw modem/router geconfigureerd en mag u dit venster sluiten.

Modem resetten naar fabrieksinstellingen.

The screenshot shows the Philips Advanced Setup web interface. The browser window is titled "http://192.168.1.1/index.stm - Microsoft Internet Explorer". The page has a blue header with the "PHILIPS" logo and "ADVANCED SETUP" text. A navigation bar includes "Home" and "Logout" links. The left sidebar shows "ADSL Settings" and "Advanced Settings". The main content area is titled "Status" and contains the following information:

Status
You can use the Status screen to see the connection status for the router's WAN/LAN interfaces, firmware and hardware version numbers, any illegal attempts to access your network, as well as information on all DHCP client PCs currently connected to your network.

Current Time: 08/01/2003 00:02:46 am

| INTERNET | GATEWAY | INFORMATION |
|---|---|---|
| ADSL: Physical Down <input type="button" value="Connect"/> | IP Address: 192.168.1.1 Subnet Mask: 255.255.255.0 DHCP Server: Enabled Firewall: Enabled Wireless: Enabled | Numbers of DHCP Clients: 1 Runtime Code Version: 0.34c (Apr 6 2005 17:58:29) Boot Code Version: 0.62 ADSL Modem Code Version: 03.00.16.255A LAN MAC Address: 00-12-BF-0E-5D-3E Wireless MAC Address: 00-12-BF-0E-5D-40 WAN MAC Address: 00-12-BF-0E-5D-3F Hardware Version: 01 Serial Num: S532035208 |

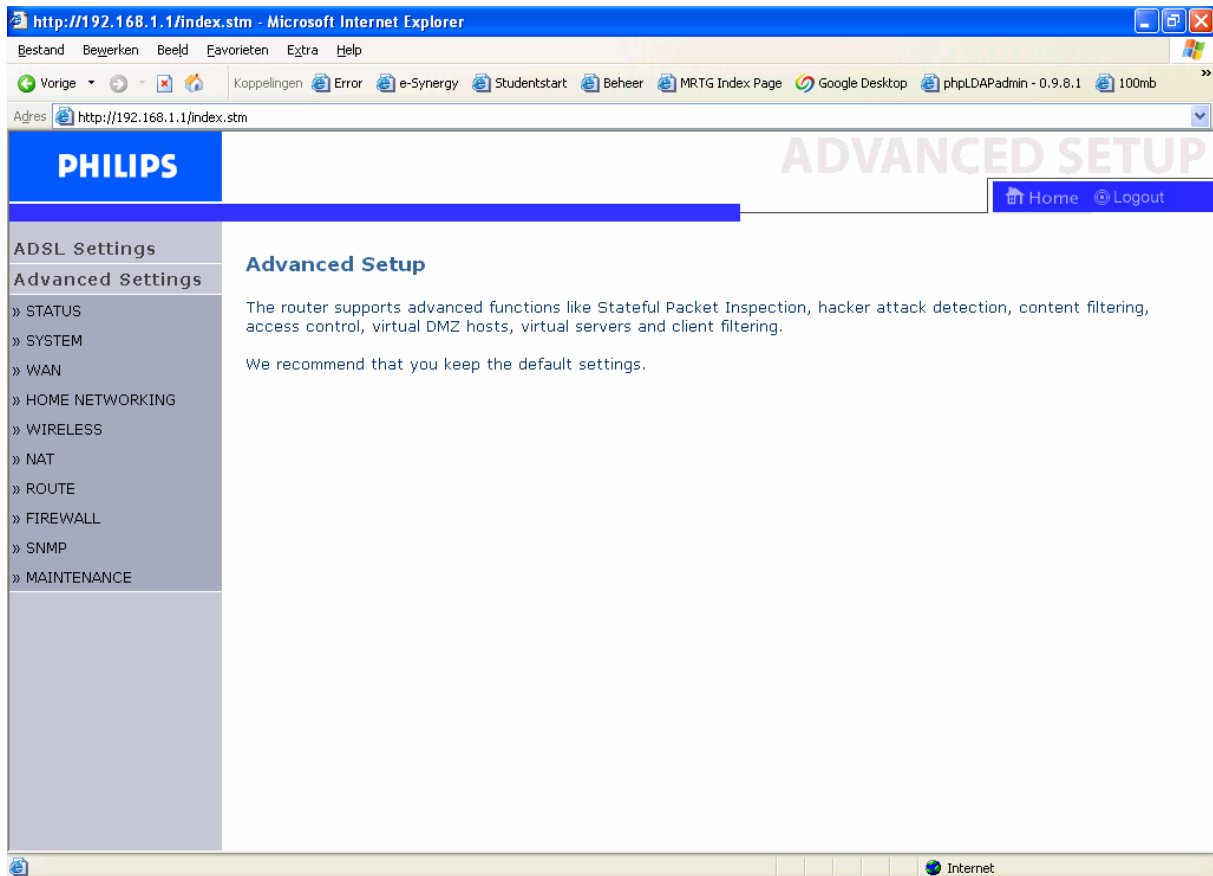
ATM PVC

| VC1 | VC2 |
|---------------|---------------|
| VPI/VCI: 8/35 | VPI/VCI: 8/35 |

The browser's status bar at the bottom shows "Gereed" and "Internet".

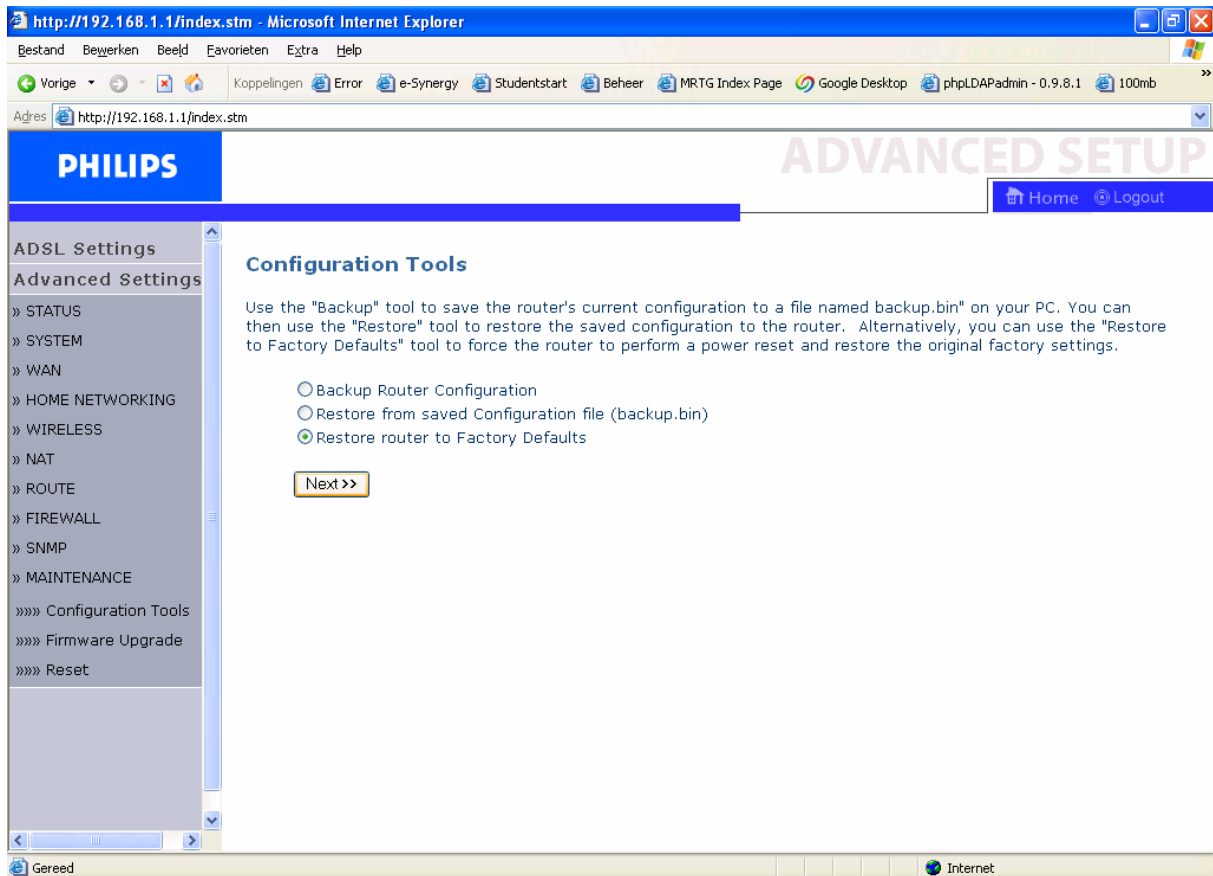
- Bij de start pagina van de modem klikt u op 'Advanced Settings'.

- Dan komt u op het volgend scherm.



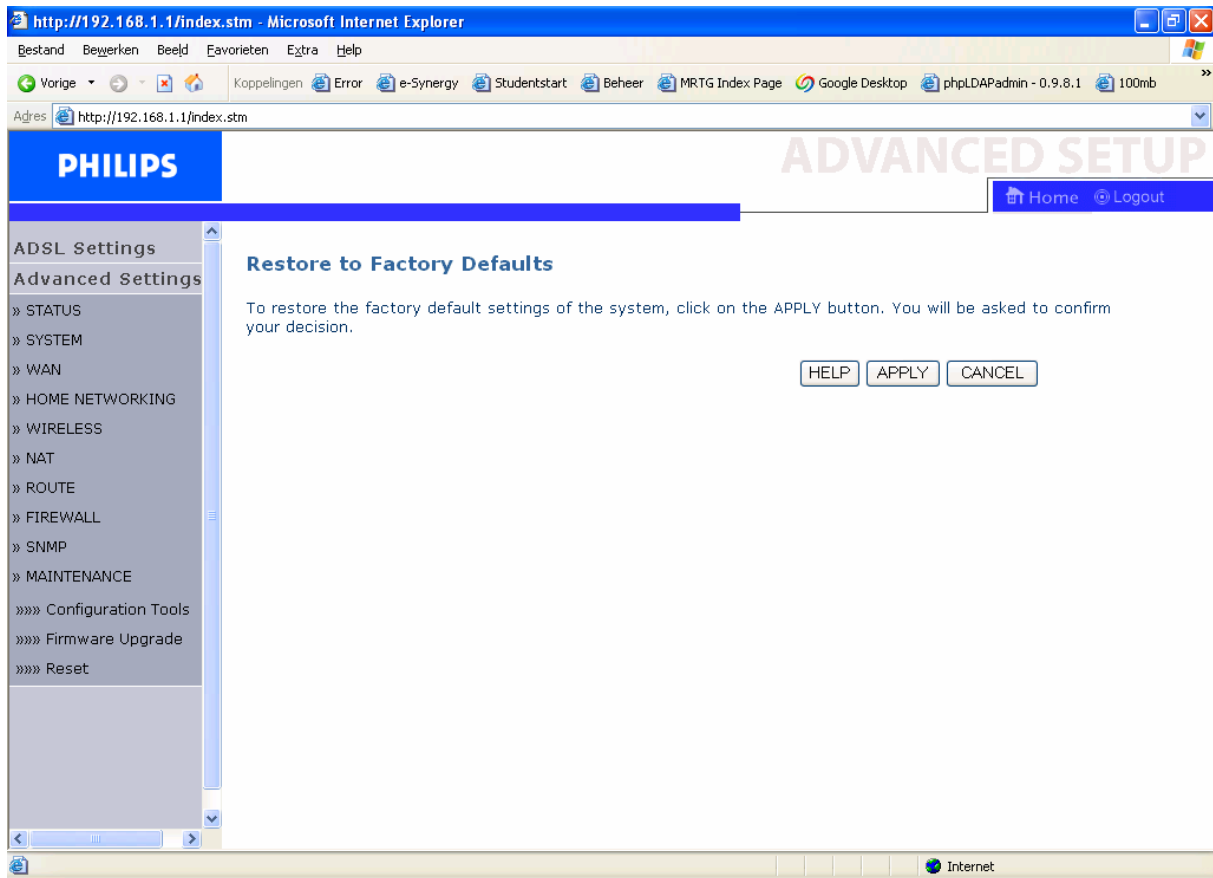
- Hier klikt u op 'MAINTENANCE'.

- Dan komt u op het volgende scherm.



- Hier kiest u 'Restore router to Factory Defaults' en klik op 'Next'.

- Dan komt u op het volgende scherm.



- Hier klikt u op 'Apply'.



- Dan wordt er een bevestiging gevraagd, hier klikt u op 'OK'.
- Nu moet u enkel nog wachten totdat de 100% bereikt is.

